



**hollandbio**

# Exclusive Discounts on Laboratory Supplies for Hollandbio Members

## Save on Laboratory Essentials

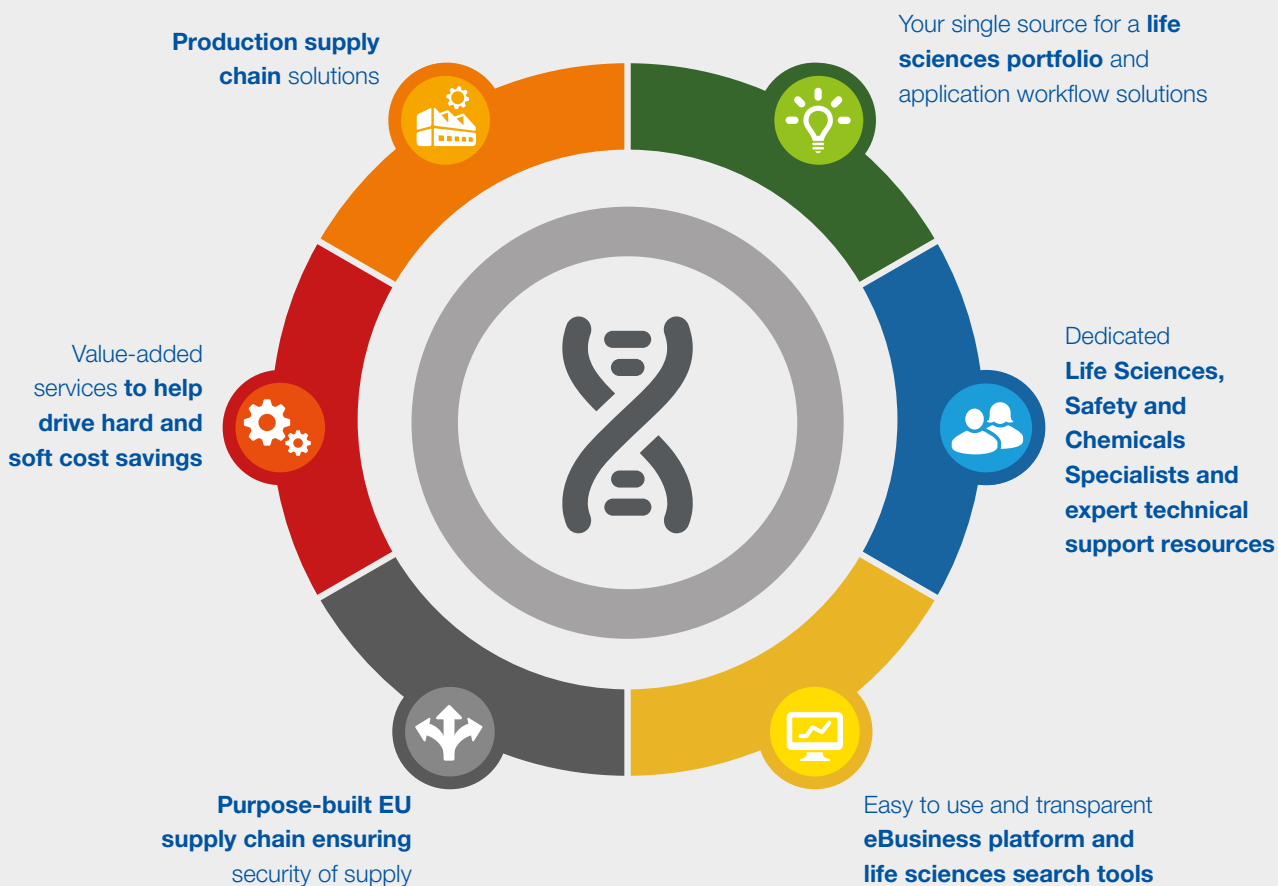
How to Participate

Please contact:

Your Advantages at a Glance

# The Fisher Scientific Channel Offers a Wide Range of Capabilities

Different tools to help optimise your supply chain  
and increase productivity





## New Lab Start-Up Program

The New Lab Start-Up (NLSU) Program is designed specifically for those customers setting up a new lab, or refurbishing an existing one, and offers you all the support you need together with the key advantage of sourcing everything from a one-stop supplier at very competitive prices.

As well as potential savings of over €50 000, and guidance from a dedicated sales representative, the NLSU program also offers:

- BIG brand savings
- Flexibility
- A package tailored to your needs

- A comprehensive product range
- Self-manufactured chemicals
- New, free and special-offer products
- Fisherbrand™ vouchers the more you spend

Eligibility for the program:

- Setting up a new lab
- Expanding or renovating your lab
- Relocating to new premises
- In receipt of a first-time grant

Simply fill out the online form:

[eu.fishersci.com/go/nlsu](https://eu.fishersci.com/go/nlsu)

**3M**

**Ansell**

**asecos**

**BINDER**  
Best conditions for your success

**Agilent**

**burkle**

**BRADY**  
WHEN PERFORMANCE MATTERS MOST

**CORNING**

**cytiva**

**Cole-Parmer**  
an omnia scientific company

**DUPONT**

**dwk life sciences**  
DURAN WHEATON KIMBLE

**eppendorf**

**fisherbrand**

**GILSON**

**Harvard Bioscience, Inc.**

**Honeywell**

**Kimberly-Clark PROFESSIONAL**

**iba**  
Solutions For Life Sciences

**LABCONCO**

**memmert**  
TECH

**MERCK MP**

**OHARAUS**

**SARTORIUS**

**SCAT**

**SP SCIENCEWARE**  
H-B Instruments • Bio-Art • Wilmaad-Labglass

**thermo scientific**

# Online

With our advanced and state-of-the-art website you can take control.

At [eu.fishersci.com](https://eu.fishersci.com) we have the easiest and quickest solutions:

- Speciality product search tools such as our new antibody tool
- Add approval workflows to provide greater control
- See your quotes and convert them into an order
- Download purchase history for your accounts
- Real-time stock availability and lead times
- Enhanced order visibility and tracking
- Create My Lists for easy reordering
- Customer net pricing
- Find more sustainable products using the Greener Choice range

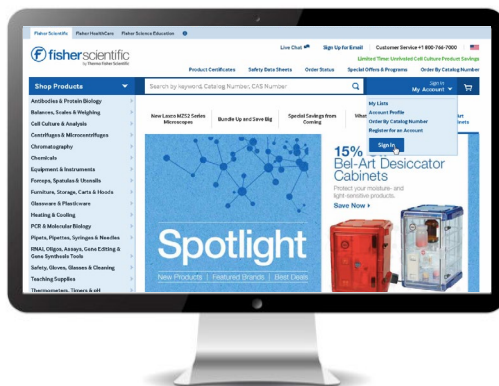
## How to Participate

1. [Apply for a business account](#) to make a purchase from our full range of products
2. [Sign-up for a web account](#) if you already have a business account and know your business account number, to then buy online

More can be found online:

- Products in our 'Spotlight' promotions
- Same-day shipment for items in the Fisher Scientific 'Edge' program
- 'Product of the Month' features
- Subscribe to newsletters
- Exclusive promo codes
- New products

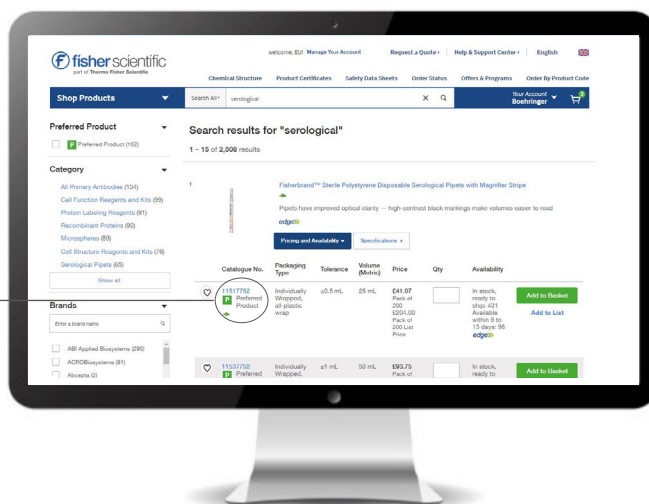
and much, much more ...



# Preferred Products

How to find your Hotlist items? Your Hotlist items are marked as Preferred Products with the icon **P** on [eu.fishersci.com](https://eu.fishersci.com)

Use the Preferred Product filter along the left side of your search results to find the best discounts on the Hotlist items.



To maximize the benefits of partnering with us, your contracted products are highlighted with a logo on our website when you log in.

# The Edge Program **edge**»»

The Edge program ensures quick shipment of our most in-demand products. Products that are part of the program feature enhanced content and qualify for standard same-day shipping. To make shopping easy, they're all marked with the icon on [eu.fishersci.com](https://eu.fishersci.com).

## Faster Sourcing

- Order any product marked with the Edge icon before 14:00 in the local time zone and we will dispatch the same day
- Orders placed after 14:00 will dispatch the next business day

## Greater Productivity

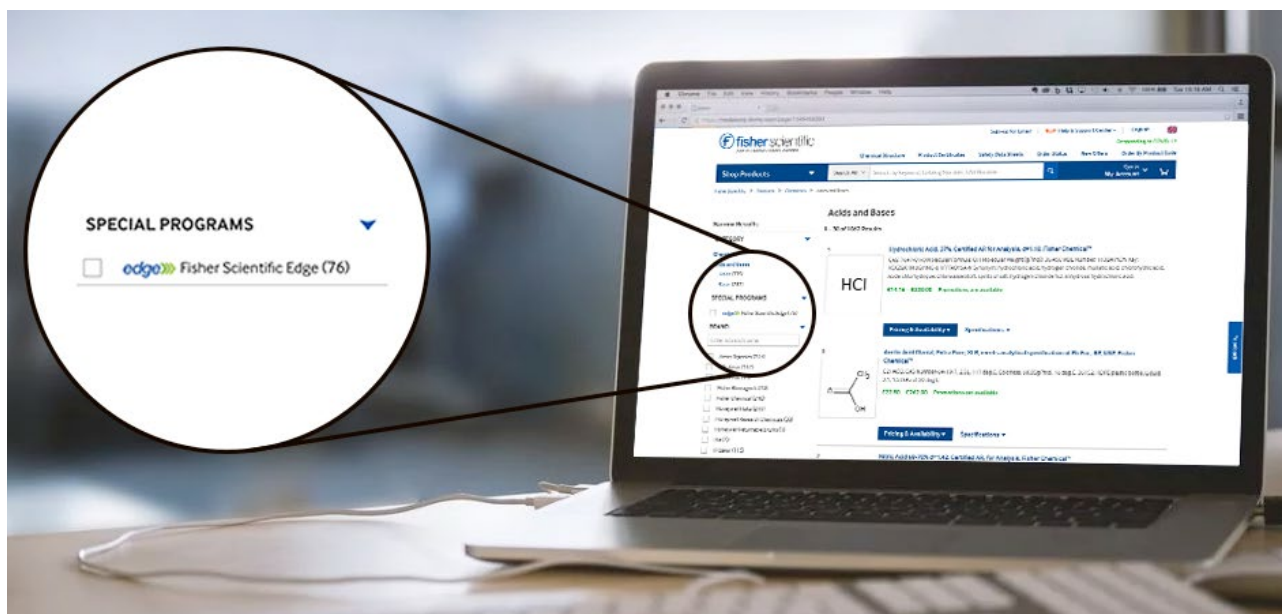
- By prioritising the products that customers like you use the most, the Edge program lets you spend less time procuring and more time making progress

## Easier Selection

- Find Edge program items instantly by using the Special Programs filter along the left side of your search results

Edge items offer the best delivery and website content on our most popular items from key supplier partners right across Europe.

Find out more at: [eu.fishersci.com/go/edge](https://eu.fishersci.com/go/edge)



# Greener Choice



## Supporting your Environmental Goals

Striving to protect and preserve the environment and helping you do the same is one of our commitments to you. The Greener Choice Program makes it easy to find lab products that align with your sustainability goals.

Simply look for the  leaf icon in search results to identify qualifying products.

## How do Greener Choice Products Qualify?

- Greener Choice items offer one or more environmental green benefits
- Items are environmentally preferable to other products in the same category
- Suppliers provide assurance their green benefits remain substantiated over time

Greener Choice qualifying environmental benefits include:

Find out more at: [eu.fishersci.com/go/green-solutions](https://eu.fishersci.com/go/green-solutions)

## Solutions for a Lower Carbon Future

Supporting Your Environmental Goals

Transport | Products | Labelling | Recycling | Reporting





# The Fisherbrand Guarantee

## It's Our Promise

We stand behind our products with a 100% satisfaction guarantee. So buy it, try it, and if within 30 days you don't love it as much as we do, we'll give you your money back — guaranteed.

Fisherbrand products indicated with 'The Fisherbrand Guarantee' icon are sold with a thirty day 'no hassle' return policy.



Customers may return Fisherbrand products for convenience within thirty days of receipt for full credit of purchase price (excluding freight) with the following exceptions:

- Products which have been discontinued
- Products which are personalised or customised
- Non-stock products
- Refrigerated or temperature controlled products
- Reagents, diagnostics or chemicals which have been opened
- Medical devices

Full credit limited to a quantity of one individual Fisherbrand item per order. For the avoidance of doubt, nothing in this clause limits the customer's ability to return, or make a warranty claim in respect of any product that is delivered in a defective condition or fails during the relevant warranty period.

## The Fisherbrand Guarantee

It's our promise - If one of our Fisherbrand products doesn't completely satisfy, we'll make it right.



## Other

### Proprietary Label Products From Fisherbrand™ Products

- Reliable, trusted products
- Economical quality brand alternative
- Wide range of consumables and lab essentials
- Premium features similar to leading competitor brands but often at a fraction of the cost

### Top Chemicals and Reagents

A comprehensive portfolio of organics, inorganics, solvents and bioreagents from these premium Thermo Fisher Scientific brands. Our specialised chemical services are also able to offer tailored solvents or solvent blends to your own specification, customised pack sizes or pack labelling, supply chain control and integrity, special testing plus inventory management with lot control.



**ThermoFisher**  
SCIENTIFIC

 **fisher**  
chemical

 **fisher**  
bioreagents

 **fisher scientific**  
part of Thermo Fisher Scientific

Distributed by Fisher Scientific. Contact us today:

**Austria:** fishersci.at **Belgium:** fishersci.be **Denmark:** fishersci.dk  
**Germany:** fishersci.de **Ireland:** fishersci.ie **Italy:** fishersci.it  
**Finland:** fishersci.fi **France:** fishersci.fr **Netherlands:** fishersci.nl  
**Norway:** fishersci.no **Portugal:** fishersci.pt **Spain:** fishersci.es  
**Sweden:** fishersci.se **Switzerland:** fishersci.ch **UK:** fishersci.co.uk

© 2024 Thermo Fisher Scientific Inc. All rights reserved.  
Trademarks used are owned as indicated at [fishersci.com/trademarks](https://fishersci.com/trademarks).

22884

