

A close-up photograph of two hands wearing blue nitrile gloves, shaking in a firm grip. The hands are emerging from white lab coats. The background is a soft, out-of-focus light beige.

HollandBIO & the Fisher Scientific Channel Team Up

New Partnership for Laboratory Supplies

SAVE ON LABORATORY ESSENTIALS

The Fisher Scientific team is partnering with HollandBIO to provide HollandBIO members with a complete portfolio of laboratory equipment, chemicals, supplies and services offering exceptional choice and convenience. Whether you are a new start-up company or an established biotech, the Fisher Scientific channel is your one-stop shop for life science products and services for the bioscience community. Fisher Scientific's extensive list of exclusive alliances with major manufacturers allows us to give you easy access to the products that are most in demand – all from one supplier.

PARTNERSHIP HIGHLIGHTS

- Access the complete portfolio of laboratory equipment, chemicals, supplies and services at: fishersci.nl
- Hot-list of over 1600 specially priced biotech laboratory essentials with an average discount of **40%**
- Discounts on hot-list items may reach as high as **90%**

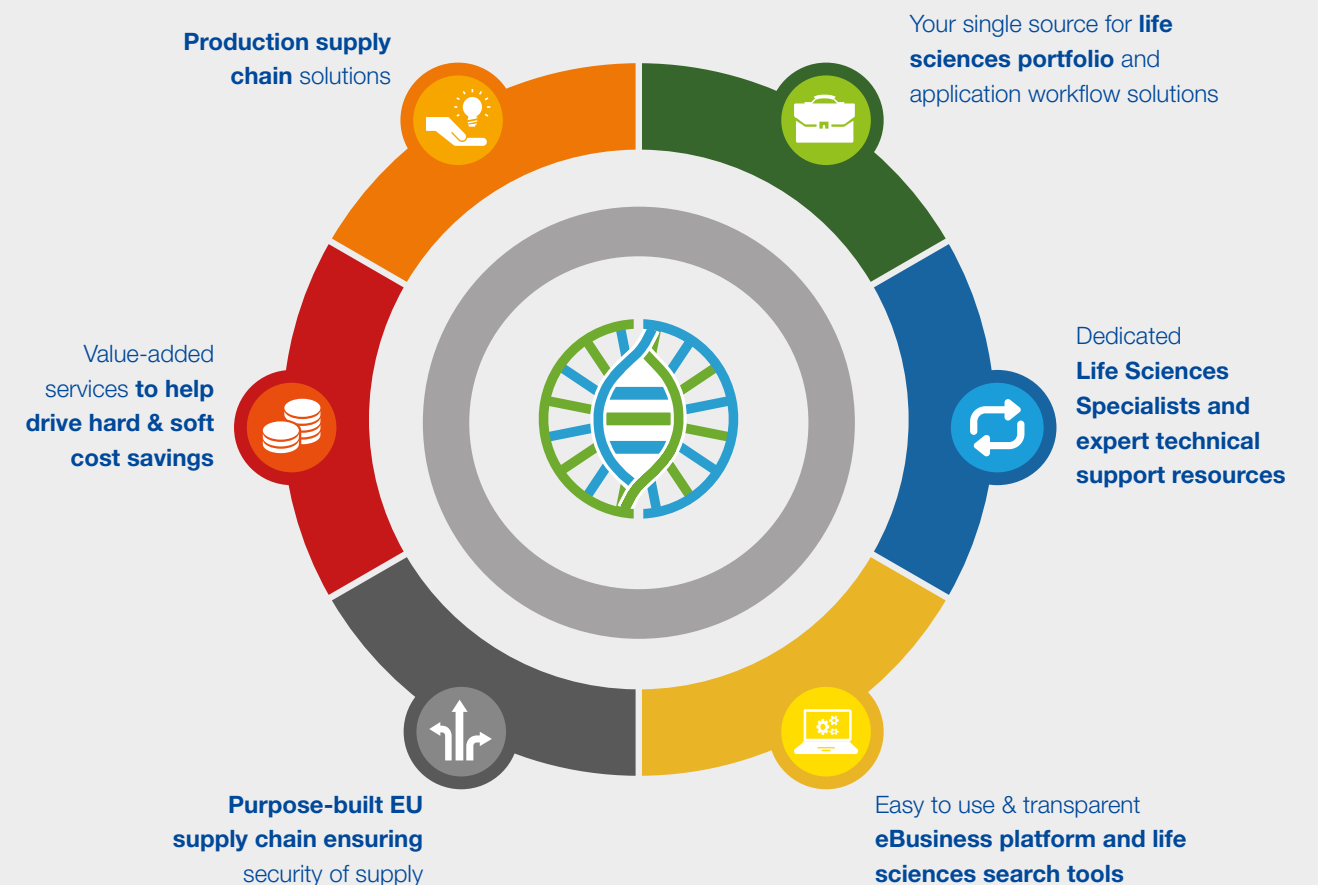
- Average of **20%** discount on non-hot list items throughout the Fisher Scientific catalogue
- Additional customised discounts specifically for your company are optional
- Several programmes available to fulfil your needs

START SAVING

- The purchasing programme is available for all HollandBIO members, free of charge
- Contact the HollandBIO's business Solutions Team for more information at BS@HollandBIO.nl.

The Fisher Scientific channel offers a wide range of capabilities

Different tools to help optimise your supply chain
and increase productivity





NEW LAB-START-UP PROGRAMME

The New Lab Start-Up (NLSU) Programme is designed specifically for those customers setting up a new lab, or refurbishing an existing one, and offers you all the support you need together with the key advantage of sourcing everything from a one-stop supplier at very competitive prices.

As well as potential savings of over €50 000, and guidance from a dedicated sales representative, the NLSU programme also offers:

- BIG brand savings
- Flexibility
- A package tailored to your needs

- A comprehensive product range
- Self-manufactured chemicals
- New, free and special-offer products
- Fisherbrand™ vouchers the more you spend

Eligibility for the programme:

- Setting up a new lab
- Expanding or renovating your lab
- Relocating to new premises
- In receipt of a first-time grant

Simply fill out the online form:

fishersci.nl/nl/nl/new-lab-start-up.html



UNITY LAB SERVICES

To improve your laboratory's efficiency, you should be free to focus on your work, not burdened with managing service requirements. We provide a complete portfolio of customised, integrated and innovative services and support solutions designed to help you improve productivity, reduce total cost of ownership and ensure compliance throughout your laboratory – from equipment acquisition right through to its end-of-life!

SOLUTIONS FOR YOUR INSTRUMENTS

Items of laboratory and scientific equipment are major investments and are very important to your lab. Unity™ Lab Services can help protect and optimise that investment. We provide a complete portfolio of services and support solutions designed to help you improve productivity, reduce total cost of ownership and ensure performance throughout your laboratory.

ENTERPRISE SOLUTIONS

Unity Lab Services is your single source for integrated lab services, support and supply management:

- Complete multi-vendor instrument and equipment service management
- Glassware washing, gas cylinder and garment management
- Order, inventory, chemical and dock management
- Service evaluations & needs assessments
- Highly trained, seasoned professionals
- Training programmes

unity lab services



New Partnership for Laboratory Supplies

ONLINE

With our advanced and state-of-the-art website you can take control.

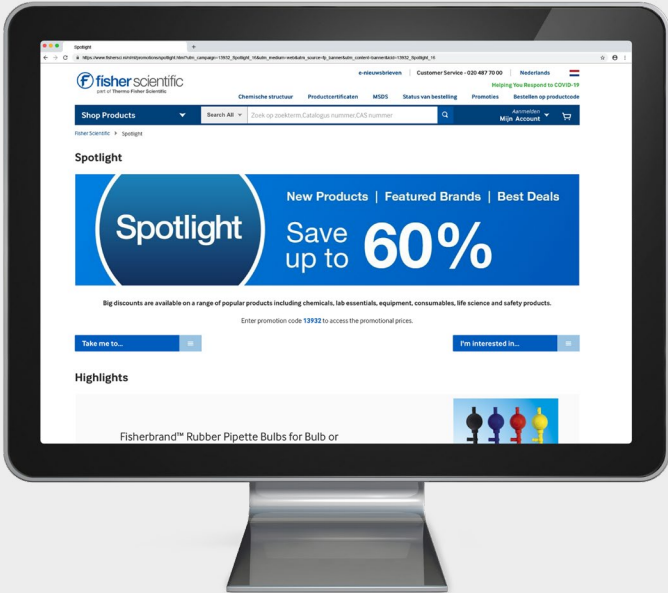
At fishersci.nl we have the easiest and quickest solutions:

- Speciality product search tools such as our **new antibody tool**
- Add approval workflows to provide greater control
- See your quotes and convert them into an order
- Download purchase history for your accounts
- Real-time stock availability and lead times
- Enhanced order visibility and tracking
- Create My Lists for easy reordering
- Customer net pricing

1. [Apply for a business account](#) to make a purchase from our full range of products
2. [Sign-up for a web account](#) if you already have a business account and know your business account number, to then buy online.

More can be found online:

- Products in our ‘Spotlight’ promotions
 - Same-day shipment for items in the Fisher Scientific ‘Edge’ programme
 - ‘Product of the Month’ features
 - Subscribe to newsletters
 - Exclusive promo codes
 - New products
- and much much more ...



OTHER

PROPRIETARY LABEL PRODUCTS FROM FISHERBRAND PRODUCTS

- Reliable, trusted products
- Economical quality brand alternative
- Wide range of consumables and lab essentials
- Premium features similar to leading competitor brands but often at a fraction of the cost

TOP CHEMICALS AND REAGENTS

A comprehensive portfolio of organics, inorganics, solvents and bioreagents from these premium Thermo Fisher Scientific brands. Our specialised chemical services are also able to offer tailored solvents or solvent blends to your own specification, customised pack sizes or pack labelling, supply chain control and integrity, special testing plus inventory management with lot control.



 Part of Thermo Fisher Scientific			
 part of Thermo Fisher Scientific			

